

New Jersey Department of Education (NJDOE) School Performance Reports

Presentation to Jackson Board of Education

April 29, 2020

Dan Baginski, Assistant Superintendent

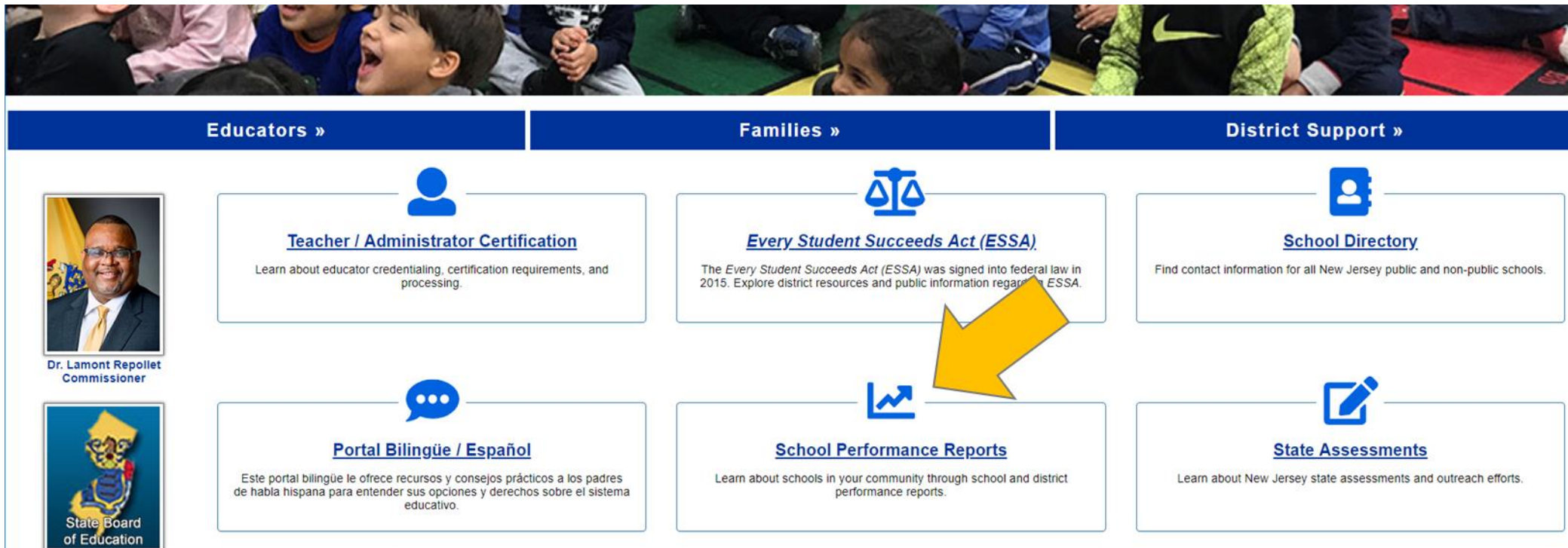


2018-19 School Performance Reports







- The **School Performance Reports** reflect the New Jersey Department of Education's commitment to providing parents, students, and school communities with a large variety of information about each school and district. These reports can be used as a tool to help evaluate whether all students have equitable access to high quality education.
- Communities are encouraged to use these reports to **learn more, start conversations, and engage.**
- In addition to meeting the federal report requirements under *ESSA*, NJDOE is committed to developing reports that **provide stakeholders with a broader picture of their schools and districts.**
- Along with the **detailed School Performance Reports** for each school, district, and state, **one-page Summary Reports** for each school and district are also available. The Summary Reports provide a high-level summary of how well a school or district is performing.
- The reports and resources are also translated into Spanish.

Where Can You Find the Performance Reports?

You can find the performance reports on the New Jersey Department of Education homepage, www.nj.gov/education. Use the “School Performance Reports” link in the center of the page.



The screenshot shows the navigation menu of the New Jersey Department of Education website. It features three main categories: Educators, Families, and District Support. Each category has several links with icons and brief descriptions. A large yellow arrow points to the 'School Performance Reports' link under the Families category.

Educators »	Families »	District Support »
 Dr. Lamont Repollet Commissioner	 <u>Every Student Succeeds Act (ESSA)</u> The <i>Every Student Succeeds Act (ESSA)</i> was signed into federal law in 2015. Explore district resources and public information regarding ESSA.	 <u>School Directory</u> Find contact information for all New Jersey public and non-public schools.
 <u>Portal Bilingüe / Español</u> Este portal bilingüe le ofrece recursos y consejos prácticos a los padres de habla hispana para entender sus opciones y derechos sobre el sistema educativo.	 <u>School Performance Reports</u> Learn about schools in your community through school and district performance reports.	 <u>State Assessments</u> Learn about New Jersey state assessments and outreach efforts.

School Performance Reports Homepage

You can also go directly to the School Performance Reports homepage, www.njschooldata.org.



- [Performance Reports Home Page](#)
- [Resource Documents](#)
- [Reference Guide](#)
- [Summary Report Guide](#)
- [Frequently Asked Questions](#)
- [Videos and Other Resources](#)
- [Data Privacy Rules \(FERPA\)](#)
- [Take our Feedback Survey](#)
- [Download the Data](#)

New Jersey School Performance Reports

The School Performance Reports reflect the NJDOE's extensive efforts to engage with parents, students, and school communities and share the information that is most valuable in providing a picture of overall school performance. Communities are encouraged to use these reports to **learn more, start conversations, and engage.**

Search for a school or district below to get started.

Select School Year: [View report data prior to 2011-2012](#)

Select Report Type: School District State

Select Search Type: School/District/County Dropdown School Name Zip Code

County:

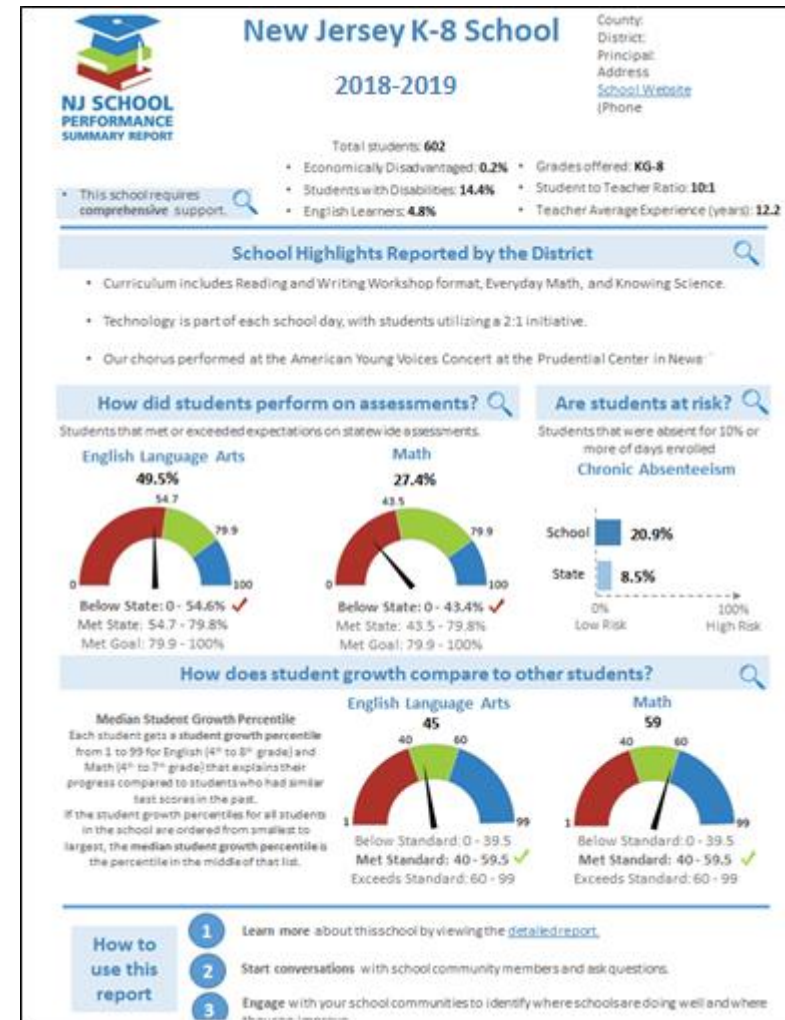
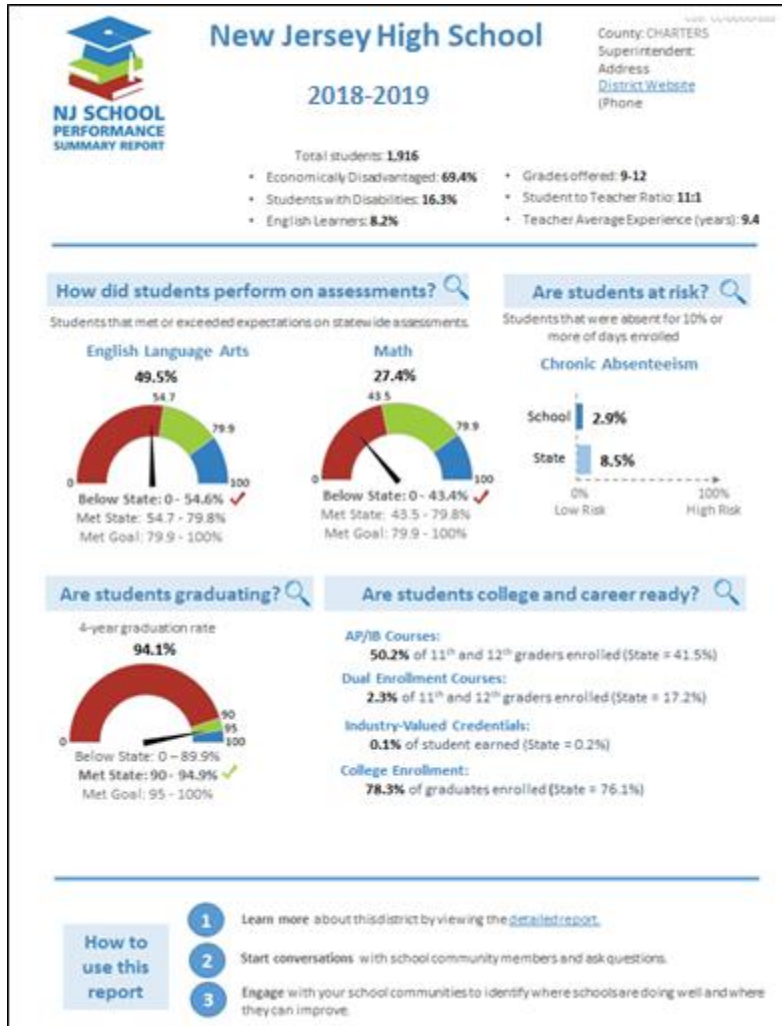
District:

School:

[Search for Reports](#)

[View an alphabetical list of all schools](#)

Summary Performance Reports



What Kinds of Information Do the School Performance Reports Include?

The New Jersey School Performance Reports contain hundreds of data points about schools and districts across New Jersey including:

- ✓ School and district overviews
- ✓ Demographic information
- ✓ Student growth
- ✓ Academic achievement
- ✓ College and career readiness
- ✓ Graduation and postsecondary information
- ✓ School climate and environment
- ✓ Staff information
- ✓ School Accountability
- ✓ School and district narrative information

New Data Added to the Full Reports

NJDOE added several new data elements to the 2018-19 School Performance Reports based on requests received during stakeholder engagement, federal reporting requirements, and the goal of promoting equity and progress:

- Participation in Computer Science and Information Technology courses
- School-level per-pupil expenditures
- Additional student group data for student growth, chronic absenteeism, graduation rates, and career and technical education program participation
- Three-year progress data for student growth, proficiency, and graduation rates

Progress on Accountability Indicators: 2016-17 to 2018-19

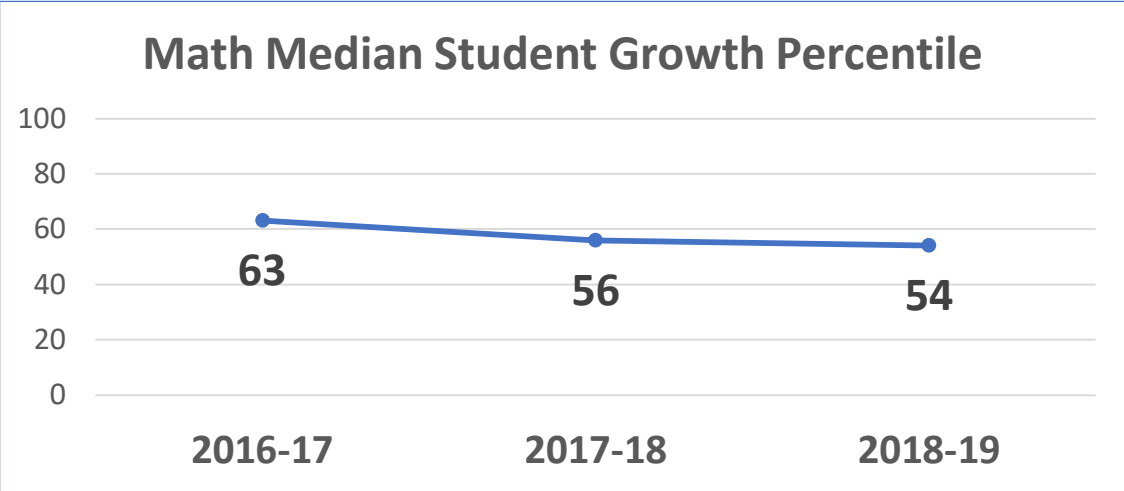
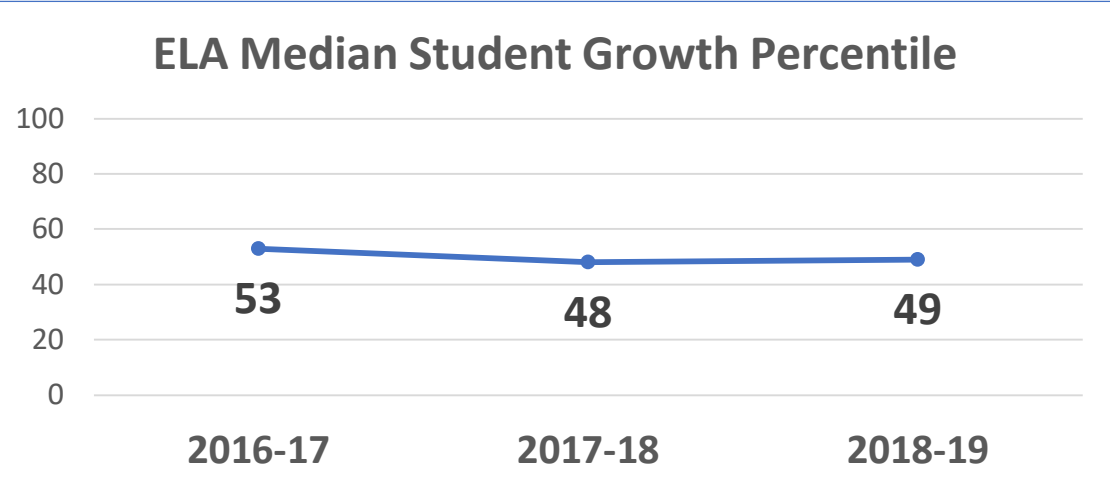
Data Measure	2016-17	2017-18	2018-19
ELA Proficiency	54.8%	55.0%	56.9%
Math Proficiency	48.6%	48.6%	48.3%
ELA Growth	53rd Percentile	48th Percentile	49th Percentile
Math Growth	63rd Percentile	56th Percentile	54th Percentile
4-Year Graduation Rate	93.8%	93.6%	93.5%
5-Year Graduation Rate	92.6%	95.4%	95.5%
Progress toward English Language Proficiency	n/a	66.9%	53.9%
Chronic Absenteeism	14.2%	14.0%	11.2%

Student Growth (1 of 2)

Each student gets a **student growth percentile (SGP)** from 1 to 99 for English (4th to 8th grade) and Mathematics (4th to 7th grade) that explains their progress compared to students who had similar test scores in the past (“academic peers”). An SGP between 35 and 65 is considered “typical”.

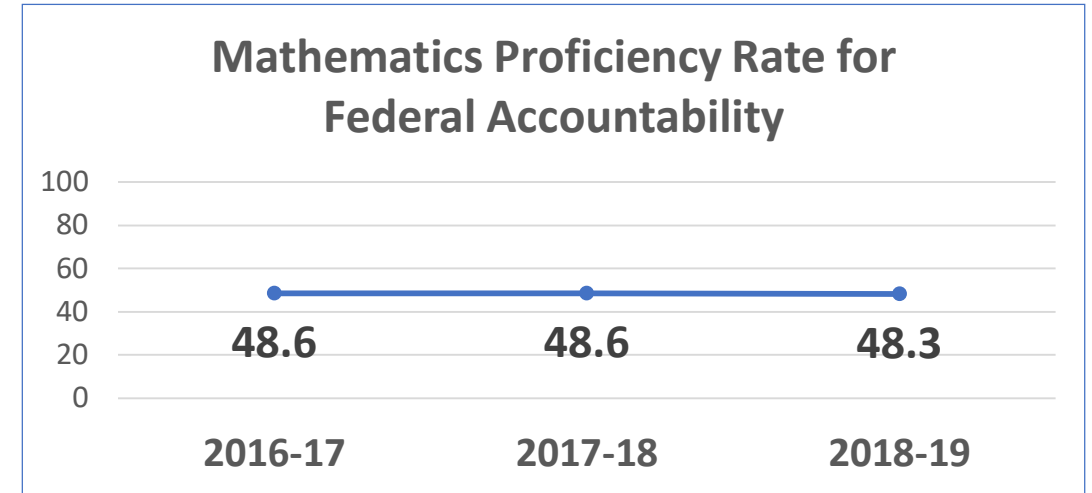
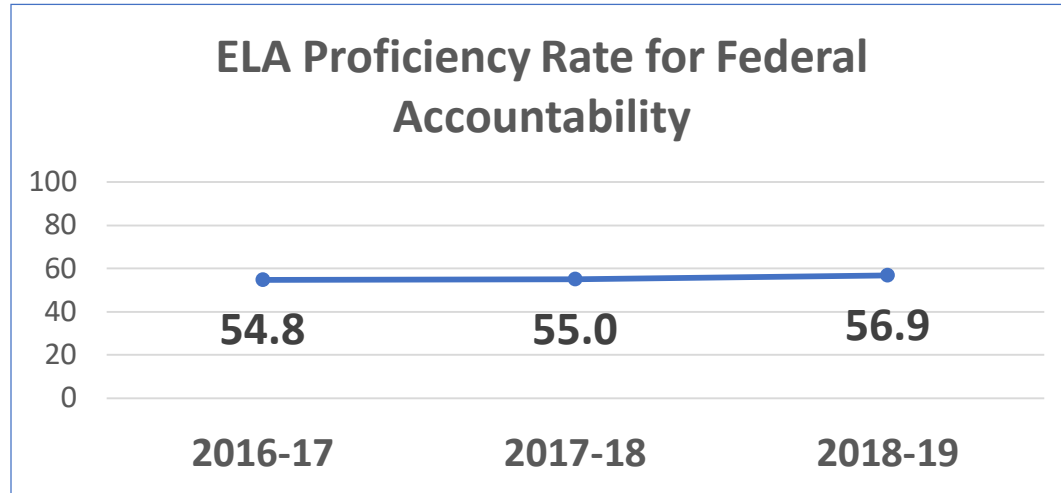
If the student growth percentiles for all students in a group (for example a school, a district, a student group, or a grade level), are ordered from smallest to largest, the **median student growth percentile (mSGP)** for that group is the percentile in the middle of the list. NJDOE’s standard for school and district accountability purposes is an mSGP of at least 40.

Student Growth (2 of 2)



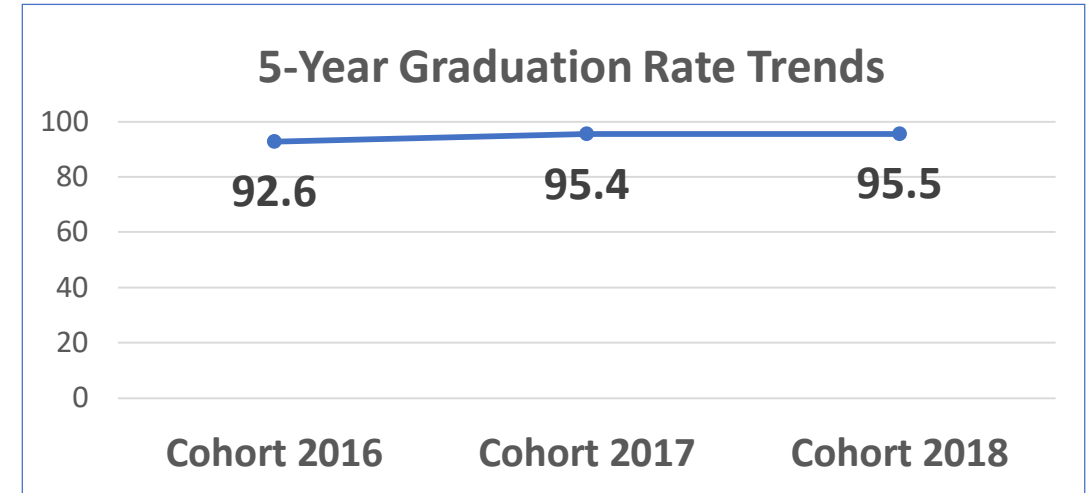
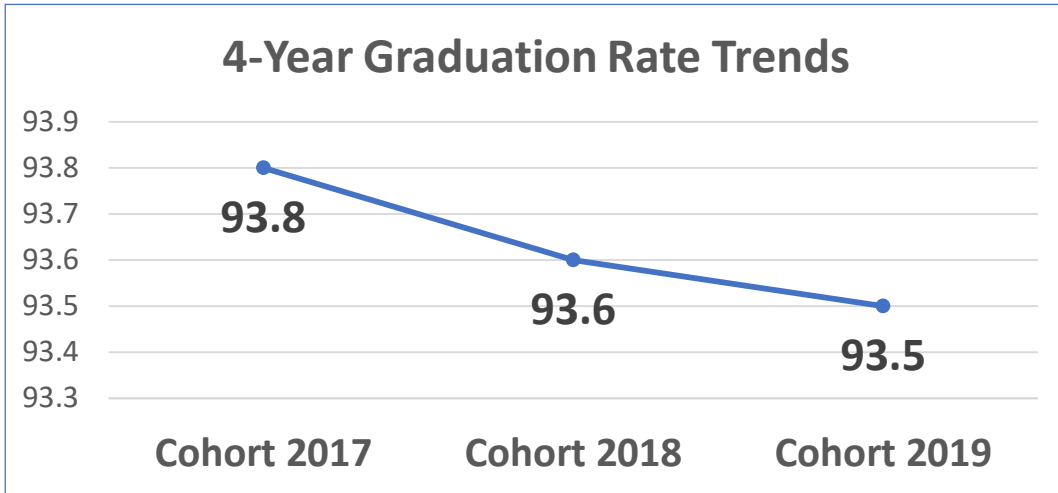
Performance	ELA 2016-17	ELA 2017-18	ELA 2018-19	Math 2016-17	Math 2017-18	Math 2018-19
Median Student Growth Percentile	53	48	49	63	56	54
Statewide Median Student Growth Percentile	50	50	50	50	50	50

Statewide Assessment Proficiency



Performance	ELA 2016-17	ELA 2017-18	ELA 2018-19	Math 2016-17	Math 2017-18	Math 2018-19
Participation	97.9	98.4	98.4	98	98.6	98.3
Proficiency Rate	54.8	55	56.9	48.6	48.6	48.3
Statewide Proficiency	54.9	56.7	57.9	43.5	45.0	44.5

Graduation Rates



Performance	Cohort 2017 4-Year Rate	Cohort 2018 4-Year Rate	Cohort 2019 4-Year Rate	Cohort 2016 5-Year Rate	Cohort 2017 5-Year Rate	Cohort 2018 5-Year Rate
Graduation Rate	93.8	93.6	93.5	92.6	95.4	95.5
State	90.5	90.9	90.6	91.8	92.4	92.5

Graduation Pathways

What assessment did students use in order to meet their graduation assessment requirement?
 New information in the reports shows how our students are qualifying for graduation.

Subject	Pathways for Class of 2019	District	State
ELA	Statewide Assessment	65.3%	62.8
ELA	Substitute Competency Assessment	26.2%	25.9%
ELA	Portfolio Appeals	3.0%	5.6%
ELA	Alternate Requirements specified in IEP	5.5%	5.6%
Math	Statewide Assessment	71.2%	56.5%
Math	Substitute Competency Assessment	17.4%	29.3%
Math	Portfolio Appeals	4.8%	7.2%
Math	Alternate Requirements specified in IEP	6.7%	6.8%

Progress Toward English Language Proficiency

One of the more significant changes under federal law *ESSA* is that it elevated attention to English Learners (ELs) by adding a measure of English language proficiency (ELP) into the overall school accountability system. Now, all schools are accountable for ensuring ELs make progress toward ELP.

Percentage of English Learners

District	State
3.2%	7.0%

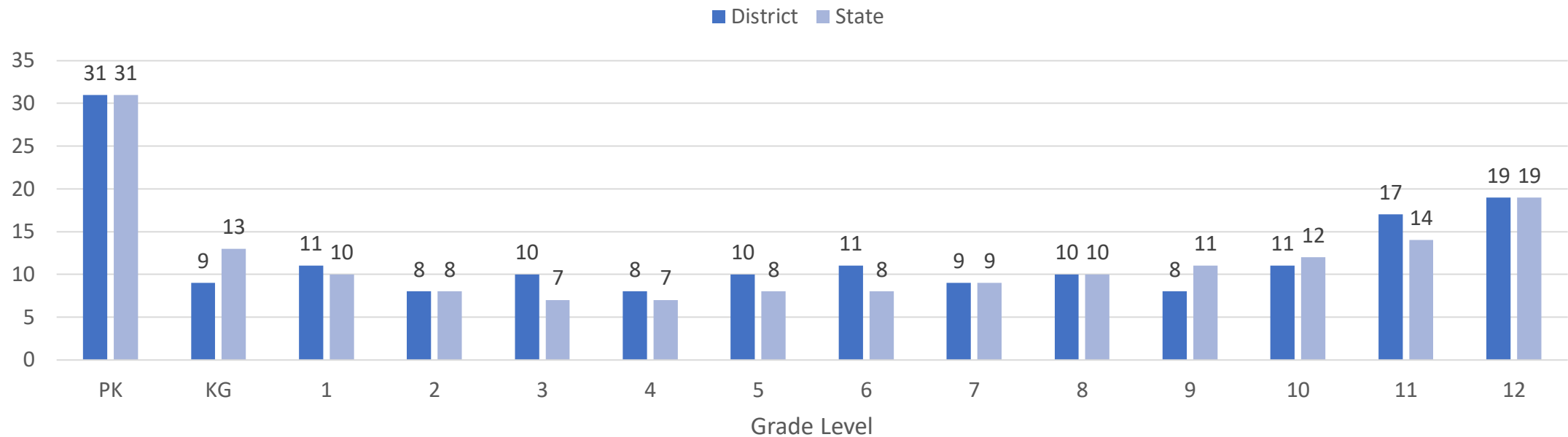
Progress Toward English Language Proficiency

District	State
53.9%	43.7%

Chronic Absenteeism

Student absences provide important information about a school’s culture and climate. Research shows that absences impact a student’s ability to succeed in school. Chronic absenteeism is defined as being absent for 10% or more of the days enrolled during the school year. A student who is not present for any reason, whether excused, unexcused, or for disciplinary action, is considered absent unless permitted by state statute or regulations.

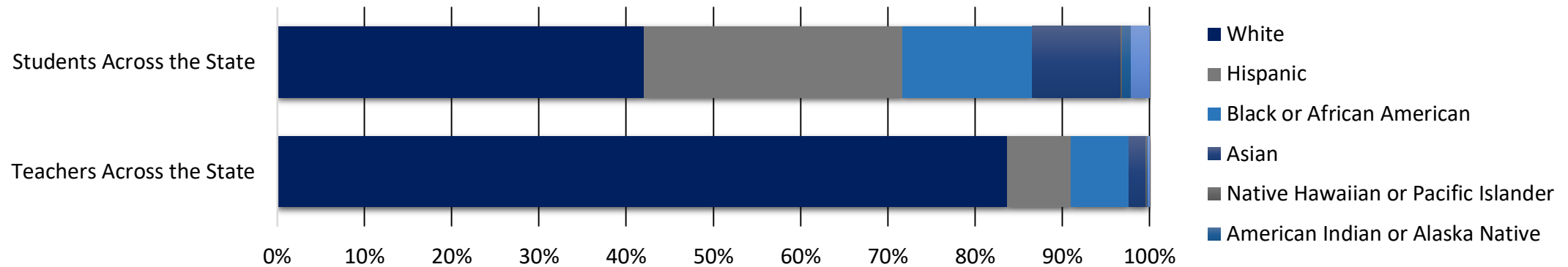
Chronic Absenteeism by Grade Level



Teacher Demographic Information (1 of 2)

Do the students in our classrooms have the opportunity to be led by diverse teachers?
Teacher diversity improves outcomes for all students.

Teachers and Students by Demographic Information – State Level

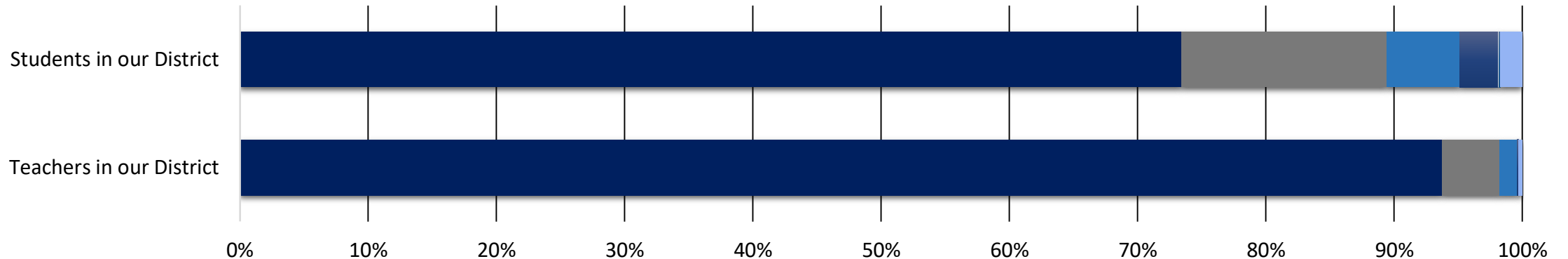


Race	Teachers Across the State	Students Across the State
White	83.6%	42.4%
Hispanic	7.3%	29.9%
Black or African American	6.6%	15.0%
Asian	2.0%	10.2%
Native Hawaiian or Pacific Islander	0.1%	0.2%
American Indian or Alaska Native	0.1%	0.1%
Two or More Races	0.2%	2.1%

Teacher Demographic Information (2 of 2)

Do the students in our classrooms have the opportunity to be led by diverse teachers?
Teacher diversity improves outcomes for all students.

Teachers and Students by Demographic Information – Our District



	Teachers in our District	Students in our District
■ White	93.7%	73.4%
■ Hispanic	4.5%	16.0%
■ Black or African American	1.4%	5.7%
■ Asian	0.1%	3.0%
■ Native Hawaiian or Pacific Islander	0.0%	0.1%
■ American Indian or Alaska Native	0.0%	0.1%
■ Two or More Races	0.3%	1.7%

College and Career Readiness (1 of 2)

The College and Career Readiness section of the reports shows information about college entrance exams, advanced coursework, career and technical education (CTE) programs, and participation in coursework across subject areas.

College and Career Readiness Measures	District	State
% of 12th graders that took SAT in high school	71.8%	72.1%
% of 12th graders that took ACT in high school	12.9%	19.6%
% of 11th and 12th graders enrolled in one or more Advanced Placement (AP) or International Baccalaureate (IB) course	31.9%	35.2%
% of 11th and 12th graders enrolled in dual enrollment coursework	0.0%	19.0%
% CTE concentrators	13.3%	10.3%
% of students earning industry-valued credentials	0.7%	0.9%
Number of students earning a Seal of Biliteracy	11	5,468

College and Career Readiness (2 of 2)

The College and Career Readiness section includes participation in visual and performing arts coursework for students in grades 6 through 12.

96.0% of students in grades 6 through 8 enrolled in an arts course (State = 90.9%)

- **72.8%** enrolled in Music courses (State = 65.1%)
- **0.0%** enrolled in Dance courses (State = 2.2%)
- **1.1%** enrolled in Drama courses (State = 7.1%)
- **83.2%** enrolled in Visual Arts courses (State = 32.9%)

47.8% of students in grades 9 through 12 enrolled in an arts course (State = 50.9%)

- **15.1%** enrolled in Music courses (State = 17.6%)
- **0.0%** enrolled in Dance courses (State = 2.3%)
- **2.8%** enrolled in Drama courses (State = 3.9%)
- **33.7%** enrolled in Visual Arts courses (State = 32.9%)

How is a Specific Student Group Performing in Our District?

Spotlight on Economically Disadvantaged (ED) Students

Metric	ED Students: District	Total Students: District	ED Students: State	Total Students: State
Percentage of population	23.3%		37.2%	
ELA Performance on State Assessment	40.8%	56.9%	40	57.9
Math Performance on State Assessment	33.9%	48.3%	26.3	44.5
Student Growth in ELA (mSGP)	49	49	48	50
Student Growth in Math (mSGP)	52	54	46	50
Graduation Rate (Cohort 2019 4-year)	89.6%	93.5%	84.0%	90.6%
Graduation Rate (Cohort 2018 5-year)	88.4%	95.5%	87.3%	92.5%
Post-secondary enrollment (16 month)	64.6%	78.3%	65.9%	77.6%
Chronic Absenteeism Rate	18.6%	11.2%	16.0%	10.6%

Student Safety in the District

Narrative Information on Student Safety

- In the Jackson School District, we believe a safe school community is achieved through a collective effort of parents, staff, students and the community. We work collaboratively with the police department, school resource officers, and our school staff to ensure a safe and secure learning experience.

Violence, Vandalism, HIB, and Substance Offenses

Incident Type	Number of Incidents: District	Number of Incidents: State
Violence	38	12,381
Vandalism	2	1,770
Weapons	16	924
Substances	62	6,234
Harassment, Intimidation, Bullying (HIB)	25	7,183
Total Unique Incidents	143	28,121
Incidents Per 100 Students Enrolled	1.75	2.00

Early Childhood Education in the District

Narrative Information on Early Childhood Education

- We offer a Pre-School Inclusion Program - a tuition-based educational environment that provides parents of students who are 3 and 4 years old the opportunity to register for a developmentally appropriate early learning experience within the school district. Special needs and typically developing pre-schoolers come together in an inclusive classroom where language, academic and social skills will be developed in a nurturing environment.

Enrollment Trends by Full/Half Day PK and KG in our District

Type of Pre-K	2016-2017	2017-2018	2018-2019
PK - Half Day	161	137	112
PK - Full Day	66	91	94
KG - Half Day	n/a	n/a	n/a
KG - Full Day	514	491	503

Student Supports and Services

Narrative Information on Student Supports and Services

- Jackson District Schools offer a comprehensive approach to supporting diverse learners offering programs and interventions based on research and identified best practices. Specialized instruction is offered to English Language Learners. Special needs programs support the least restrictive environment requirements and include inclusion programs, small group instruction and self-contained specialized instructional programs.

Student and Staff Ratios

Category	District
Students to Teachers	12:1
Students to Administrators	204:1
Teachers to Administrators	17:1
Students to Librarian/Media Specialists	816:1
Students to Nurses	583:1
Students to Counselors	371:1
Students to Child Study Team	314:1

Postsecondary Enrollment

Postsecondary Information from Narrative

- Programs to assist students in applying for college include sponsoring PSAT testing for each student, identifying students who may need fee waivers, evening SAT preparation courses at a nominal fee, and offering the SAT at a district school. Our district graduation rate is 95.5%. Of those graduates, 50% planned to attend a 4-year college and 29% planned to attend a 2-year college, with other students being either undecided or pursuing employment or military service. The class of 2018 was offered a total of \$4.3 million in scholarships. Utilizing the Naviance program helps streamline the intricate application process and identify future goals and major. District-sponsored college preparation and financial aid programs assist parents in securing the most aid possible.

Postsecondary Enrollment Rates: 16-month

Student Group	District	State
Total Population	78.3%	77.6%
White	79.6%	83.0%
Hispanic	66.7%	66.7%
Black or African American	77.3%	67.1%
Asian, Native Hawaiian, or Pacific Islander	n/a	91.7%
American Indian or Alaska Native	n/a	77.4%
Two or More Races	n/a	76.9%

How Can I Get Involved?

- Reach out to your school and district to find out about opportunities for how parents, families, and educators will work together to improve their schools.
- Schools and districts are required to engage with parents, families, educators, and community members throughout the year to assess needs related to the areas of weakness, identify strategies and resources that can impact improvement, create an improvement plan and timeline for completion.
- See NJDOE's Stakeholder Engagement Guide (<http://bit.ly/njengage>) for detailed descriptions of these requirements.

Have Feedback or Questions?

- **Additional resources** are available at: www.njschooldata.org
- **Visit** our district website for updates: <https://www.jacksonsd.org/>
- **Email** the district: aerwin@jacksonsd.org
- Take the NJDOE School Performance Reports **feedback survey**:
<https://www.surveymonkey.com/r/201819SPR>
- **Visit** the NJDOE website at: www.nj.gov/education
- **Email** the NJDOE: reportcard@doe.nj.gov